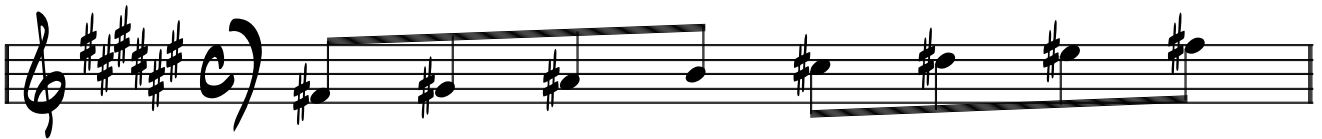


**THIS EXERCISE WILL FOCUS ON 3 MELODIES
IN F# MAJOR. THE MELODIES WILL BE PLAYED
THROUGH THE BASIC DIATONIC HARMONY IN F#
(EXERCISE 1 DESCENDS THROUGH THE HARMONY).
I MAJOR, II MINOR, III MINOR, VI MAJOR, V DOM 7
VI MINOR, VII MINOR 7 FLAT 5. HERE'S THE F# MAJOR
SCALE:**



**REMEMBER TO SIT UP STRAIGHT, RELAX YOUR SHOULDERS,
BREATHE DEEPLY, AND PLAY SLOWLY UNTIL YOU'RE COMFORTABLE
WITH THE MATERIAL. ENJOY.**

EXERCISE 1

The image displays a musical score for 'EXERCISE 1' on a single treble clef staff. The key signature is G major, indicated by two sharps (F# and C#). The score is divided into five systems, each containing three measures. The first system begins with a treble clef and a key signature of two sharps. The notes in each system are as follows:

- System 1: G4-A4-B4 (quarter), C5-B4-A4 (quarter), G4 (quarter). Slurs are placed over the first and second measures.
- System 2: G4-A4-B4 (quarter), C5-B4-A4 (quarter), G4 (quarter). Slurs are placed over the first and second measures.
- System 3: G4-A4-B4 (quarter), C5-B4-A4 (quarter), G4 (quarter). Slurs are placed over the first and second measures.
- System 4: G4-A4-B4 (quarter), C5-B4-A4 (quarter), G4 (quarter). Slurs are placed over the first and second measures.
- System 5: G4-A4-B4 (quarter), C5-B4-A4 (quarter), G4 (quarter). Slurs are placed over the first and second measures. The piece concludes with a double bar line and a final G4 note.

EXERCISE 2

Musical score for Exercise 2, consisting of nine staves of music. The piece is in 7/8 time and has a key signature of four sharps (F#, C#, G#, D#). The notation includes various rhythmic values such as eighth and sixteenth notes, rests, and beams, with some notes marked with a sharp (#).

EXERCISE 3

The musical score for Exercise 3 is written in treble clef, key signature of three sharps (F#, C#, G#), and 6/8 time. It consists of ten staves of music. The first staff begins with a treble clef, a key signature of three sharps, and a 6/8 time signature. The music is primarily composed of eighth and sixteenth notes, with various accidentals (sharps and naturals) indicating chromatic movement. The second staff continues the melodic line with similar rhythmic patterns. The third and fourth staves show a more complex rhythmic structure with sixteenth notes and eighth notes. The fifth staff begins with a whole rest, followed by a series of sixteenth notes. The sixth and seventh staves continue the melodic development with eighth and sixteenth notes. The eighth and ninth staves show a return to a simpler eighth-note pattern. The final staff concludes the exercise with a few eighth notes and a whole rest.

**IMPROVISE OVER THE FOLLOWING DIATONIC PROGRESSION
IN F# MAJOR (6/8). STAY WITHIN THE NOTES OF THE F# MAJOR
SCALE IF POSSIBLE, AND TRY TO INCORPORATE SOME OF THE
MELODIES FROM THE EXERCISES. HAVE FUN.**

The musical notation shows a diatonic progression in F# major (6/8). The top staff is in treble clef with a key signature of four sharps (F#, C#, G#, D#) and a repeat sign. It is divided into four measures, each containing a slash for improvisation. Above the staff are the chord labels: F#Δ7, BΔ7, F#Δ7, and E#-7(b5). The bottom staff is also divided into four measures with slashes for improvisation. Below the staff are the chord labels: A#-7, D#-7, G#-7, and C#7.