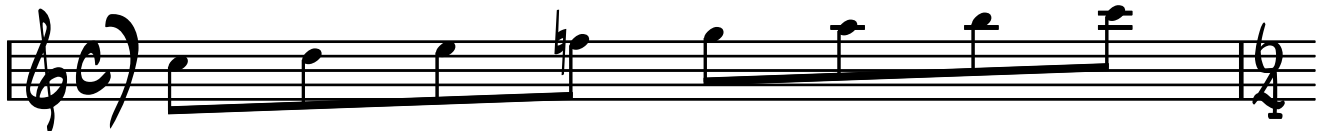


THIS LESSON COVERS THREE DIATONIC MELODIES IN THE KEY OF C MAJOR. EACH MELODY IS PLAYED THROUGH THE BASIC DIATONIC CHORDS IN MAJOR: I MAJOR, II MINOR, III MINOR, IV MAJOR V DOM 7, VI MINOR, VII MINOR 7 FLAT 5. HERE'S THE F MAJOR SCALE:



REMEMBER TO SIT UP STRAIGHT, BREATHE DEEP, RELAX YOUR SELF, AND PLAY THE EXCERSISES SLOWLY AND ACURATELY. BUILO UP SPEED ONLY WHEN COMFORTABLE. HAVE FUN.

EXERCISE 1

The image displays a musical score for "EXERCISE 1". The score is written in G major (one sharp) and 2/4 time. It consists of eight staves of music. The first staff begins with a treble clef and a key signature of one sharp (F#). The music is a single melodic line. The first four staves each contain two measures. The fifth and sixth staves each contain three measures. The seventh and eighth staves each contain two measures. The eighth staff concludes with a double bar line and a fermata over the final note. The notation includes various rhythmic values such as eighth and sixteenth notes, often beamed together, and rests. The key signature is maintained throughout the piece.

EXERCISE 2

This musical score, titled "EXERCISE 2", is written for a single melodic line in treble clef with a common time signature (C). The piece consists of ten staves of music. The first staff begins with a treble clef and a common time signature. The music is composed of eighth and sixteenth notes, often beamed together in groups. The key signature is one flat (B-flat), indicated by a flat sign on the B line of the staff. The melody moves through various intervals, including ascending and descending runs, and includes some chromatic passages. The final staff concludes with a whole note chord, likely a tonic triad (F, A-flat, C).

EXERCISE 3

The image displays a musical score for 'EXERCISE 3', consisting of eight staves of music. The first staff begins with a treble clef and a key signature of one flat (B-flat). The music is written in a single melodic line, featuring a sequence of eighth and sixteenth notes with various accidentals (sharps, flats, and naturals). The piece concludes with a final whole note chord on the eighth staff, followed by a double bar line and a repeat sign.

NOW IMPROVISE OVER THE FOLLOWING DIATONIC PROGRESSION
IN C MAJOR. TRY TO PLAY SOME OF THE MATERIAL FROM THE EXERCISES
IF POSSIBLE. ALSO TRY TO STAY JUST WITHIN THE F MAJOR SCALE. E
ENJOY.

A handwritten musical score for a diatonic progression in C major. The score consists of two staves of music. The first staff begins with a treble clef and a 7/4 time signature. It is divided into four measures, each containing a series of diagonal slashes representing a whole note. Above the first staff, the following chords are written: CΔ7, FΔ7, B-7(b5), and E-7. The second staff also contains four measures of diagonal slashes. Below the second staff, the following chords are written: A-7, D-7, G7, and CΔ7. The entire progression is enclosed in a double bar line at the end of the second staff.